

Okaply Supplies Mule-Hide FR Deck Panel to Protect Control Room

APPLICATION:

Component of fire-rated wall and ceiling assemblies for mechanical control rooms in commercial modular construction.

CODE COMPLIANCE:

Fire-resistance-rated Wall Assemblies [ICC ESR-1365, Section 4.3]. Please contact Barrier Technology (800-638-4570) for wall assembly ratings and test data or visit our website at www.intlbarrier.com.

DESCRIPTION:

Mule-Hide FR (Fire-Rated) deck panels are a key component in this wall assembly protecting commercial modular spaces from fire.

Panels consist of a layer of 7/16" OSB covered with factory-applied patented Pyrotite® coating, offering one-step assembly and avoiding the labor cost and time of putting up additional layers of fire-rated gypsum wallboard.

FR DECK PANEL ADVANTAGES:

- NO chemicals: cools with water (steam)
- One-step process (lowers labor costs)
- Adds strength to underlying board
- Class A Flame Spread (ASTM E84)
- 20 minute thermal barrier (ASTM E119)
- Non-toxic, non-hazardous
- Transferable limited lifetime warranty
- Mold resistant
- Can withstand weather on job site
- Cost competitive
- Code Compliant (ICC ESR-1365)
- May reduce insurance premiums

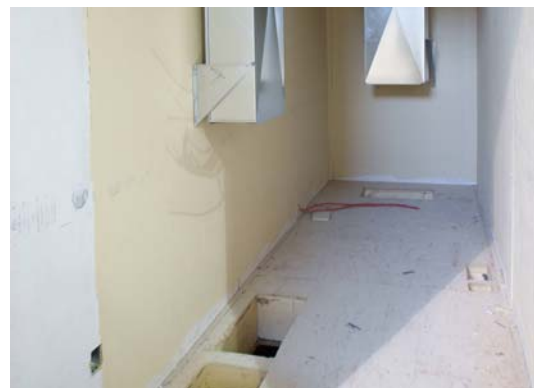
The Mule-Hide FR Deck Panel provides the easiest to install and most economical fire-rated panel for commercial modular construction on the market today.



FR Deck Panel (white interior face) lines the inside walls of these mechanical control rooms.



Fully painted FR Deck Panels walls and ceilings provide a clean, safe interior face for control rooms holding electrical, heating and plumbing equipment.



FR Deck panel can be painted or left white surface exposed. Note inspection stamp at left of photo.



(888) 479-8341
www.okaply.com

2008



(800) 638.4570 toll free
www.intlbarrier.com